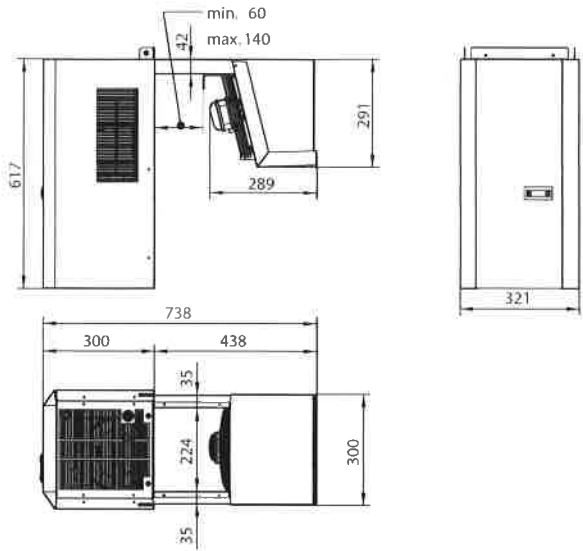
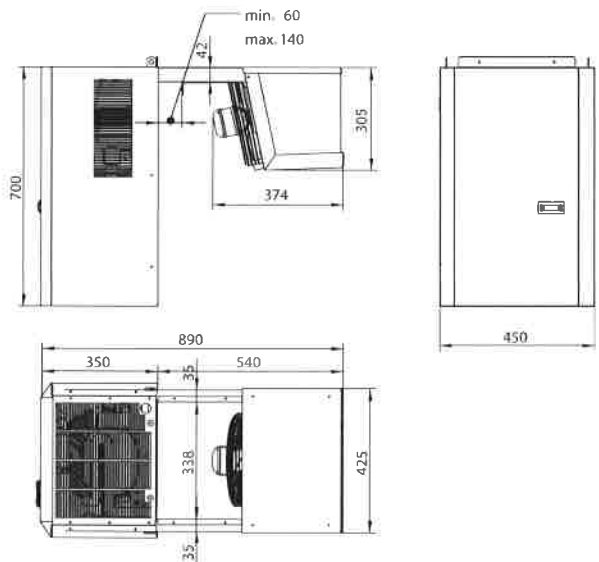


DIMENSIONI / DIMENSIONS / ENCOMBREMENT / ABMESSUNGEN / DIMENSIONES

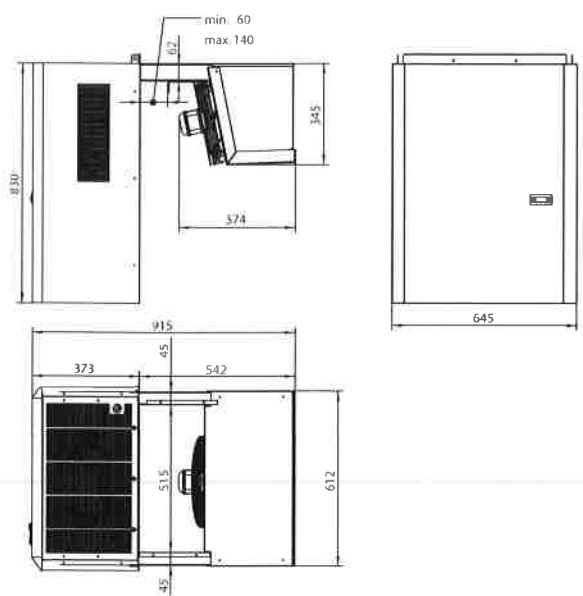
| | |
|---------|------------------|
| FORMA A | LAIKA ECO 04123N |
|---------|------------------|



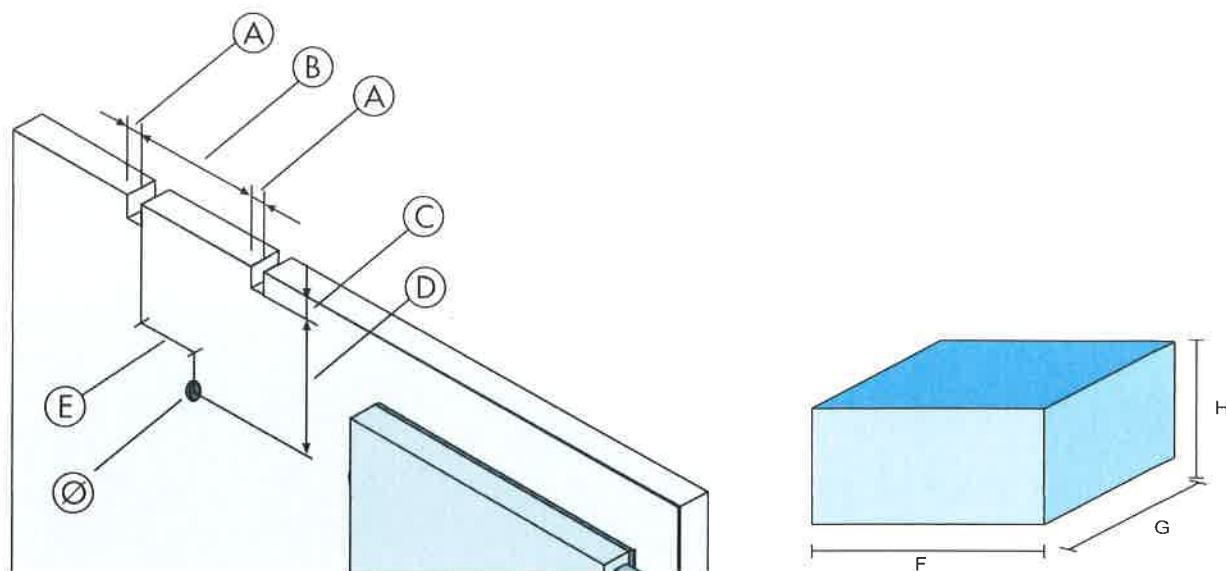
| | |
|---------|------------------|
| FORMA B | LAIKA ECO 06125N |
| | LAIKA ECO 09125N |



| | |
|---------|------------------|
| FORMA C | LAIKA ECO 11130N |
|---------|------------------|



FORATURA CELLA - COLD ROOM PERFORATION - CAVITE CHAMBRE FROID - ZELLENBOHRUNG - PERFORACION CAMARA



| Modello Model Modele Modell Modelo | A (mm) | B (mm) | C (mm) | D (mm) | E (mm) | Ø (mm) |
|--|-------------|-------------|-------------|-------------|-------------|-------------|
| LAIKA ECO 041 23N | 40 | 219 | 41 | 300 | 14,5 | 30 |
| LAIKA ECO 061 25N | 40 | 333 | 43 | 320 | 166,5 | 30 |
| LAIKA ECO 091 25N | 40 | 333 | 43 | 320 | 166,5 | 30 |
| LAIKA ECO 111 30N | 50 | 510 | 61 | 387 | 428,0 | 30 |

DATI TECNICI - TECHNICAL DATA - DONNEES TECHNIQUES - TECHNISCHE DATEN - CARACTERÍSTICAS TÉCNICAS

| Modello Model Modele Modell Modelo | F (mm) | G (mm) | H (mm) | Peso lordo Gross Weight Poids Brut Bruttogewicht Peso bruto (kg) | Materiale a corredo Supplied Fittings Accessoires livrée avec l'appareil Beiliegendes Material Material accesorio | Tensione Voltage Tension Spannung Tensión | Ventilazione Air flow Ventilation Luftaustausch Ventilación (m³/h) | Pot. dissipata Heat quantity Apport calorique Wärmeabgabe Aporto calor kW/h) |
|--|-------------|-------------|-------------|---|---|---|---|---|
| LAIKA ECO 041 23N | 760 | 350 | 680 | 48 | Lampada - lamp - ampoule - Lampe - lámpara | 230V/1P/50-60Hz+N | 530 | 1,2 |
| LAIKA ECO 061 25N | 920 | 480 | 760 | 89 | Viti fissaggio - fixing screws - vis de fixation - Fixierschrauben - tornillos fijación | 230V/1P/50-60Hz+N | 700 | 1,6 |
| LAIKA ECO 091 25N | 920 | 480 | 760 | 95 | | 230V/1P/50-60Hz+N | 700 | 2,5 |
| LAIKA ECO 111 30N | 950 | 680 | 890 | 137 | Tubo di scarico - outlet pipe - tuyau d'evacuation - Ablaufrohr - tubo de descarga | 230V/1P/50-60Hz+N | 1000 | 2,7 |

LIVELLI DI RUMOROSITÀ / NOISE LEVELS / NIVEAUX DU BRUIT / SCHALLPEGEL / NIVELES DE RUIDO

Leq* < 70 dB (A)
Lpc** < 130 dB (C)

- * nel punto più rumoroso a 1 m di distanza con macchina in funzione / in the point of max. noise at a distance of 1 m with the machine in operation / au niveau le plus bruyant à 1 m de distance avec l'appareil en fonction / am lautesten Punkt bei 1 m Abstand von dem laufenden Gerät / en el punto de más ruido a 1 m de distancia con máquina en funcionamiento
- ** valore massimo istantaneo a 1 m di distanza con macchina in funzione / max. instant value at a distance of 1 m with the machine in operation / valeur maximale instantanée à 1 m de distance avec l'appareil en fonction / Spitzenwert bei 1 m Abstand von dem laufenden Gerät / valor máximo instantáneo a 1 m de distancia con máquina en funcionamiento